

Kidde Engineered Fire Suppression System

Designed for use with 3M™ Novec™ 1230 Fire Protection Fluid
Supervisory Pressure Switch, 1-1/2-inch to 2-inch
Valve Data Sheet



Effective: March 2007
K-45-9047

FEATURES

- Both Normally Open and Normally Closed Configuration with One Unit
- Suitable for 10 lb. through 350 lb. Kidde Engineered Systems
- UL Listed
- FM Approved
- CRUUS Recognized Component (US and Canada)

P/N: 06-118262-001

DESCRIPTION

The cylinder supervisory pressure switch is intended to detect a fall in pressure in the Kidde Engineered System cylinder. The cylinder supervisory pressure switch can be wired for either normally open or normally closed operation, depending on installation requirements. This cylinder supervisory pressure switch can be installed on Kidde Engineered System cylinders, 10 lb. through 350 lb. size.

OPERATION

When the pressure in the Kidde Engineered System container drops from the standard charge pressure of 360 PSI (25 bar) to below 305 PSI (21 bar) the switch operates. If wired in the NC (open-under-pressure) configuration the resulting pressure drop will cause the contacts to close. When connected to a monitored circuit of a suppression control panel the switching will result in an alarm or trouble condition.

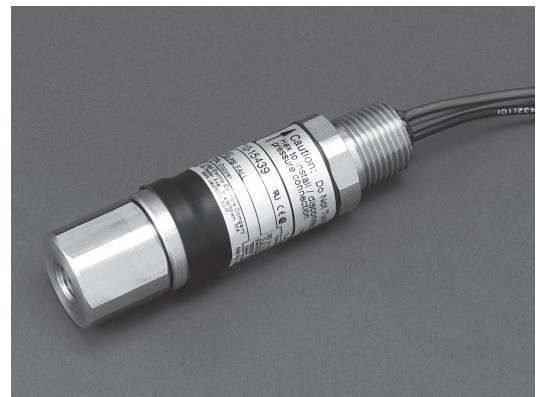
Note: If the temperature of the cylinder contents drop close to a temperature of 32°F (0°C) or less the pressure in the cylinder will be equal to or less than 305 PSI (21 bar) and the switch will operate. However the minimum operating temperature of the system is 0°F (-18°C).

INSTALLATION

The supervisory pressure switch can be installed on a fully charged cylinder, without loss of pressure, provided the unit is handled with care and only by trained service personnel. Remove the protective cap from the pressure connection. Do not apply thread compound to the threads. Install the switch with an 1-1/16 inch open-ended wrench while holding the pressure connection with a 7/16 inch open-end wrench. Tighten hand-tight, plus one-quarter turn.

Kidde is a registered trademark of Kidde-Fenwal, Inc.
3M and Novec are trademarks of 3M.
All other trademarks are property of their respective owners.

Leak check using a leak detector or bubbling solution. Secure switch body with wrench when connecting electrical conduit. Isolate the assembly from shock, vibration and areas subject to wide-ranging or rapid temperature fluctuations. Disconnect all supply circuits before wiring the supervisory switch.



ORDERING INFORMATION

The cylinder supervisory pressure switch offers combined normally opened and normally closed functionally. The part number for ordering the cylinder supervisory pressure switch is 06-118262-001.

SPECIFICATIONS

Setting:	305 PSI (21 bar) on falling pressure
Electrical rating:	5 Amps, 250 Vac
Wire color coding:	Blue = Normally Open Black = Normally Closed Violet = Common
Operating temperature range:	32 to 130°F (0 to 54°C)
Pressure connection:	0.25 in. SAE 45° flare female with valve core deflector
Wetted materials:	EPR, Brass Copper
Lead length:	36 in. ± 2 in. (914 mm ± 50 mm)

This literature is provided for informational purposes only. KIDDE-FENWAL, INC. assumes no responsibility for the product's suitability for a particular application. The product must be properly applied to work correctly.
If you need more information on this product, or if you have a particular problem or question, contact KIDDE-FENWAL, INC., Ashland, MA 01721. Telephone: (508) 881-2000.

Kidde Fire Systems
A UTC Fire & Security Company
400 Main Street
Ashland, MA 01721
Ph: 508.881.2000
Fax: 508.881.8920
www.kiddefiresystems.com

Kidde Engineered Fire Suppression System

Designed for use with 3M™ Novec™ 1230 Fire Protection Fluid



A UTC Fire & Security Company

Effective: September 2010

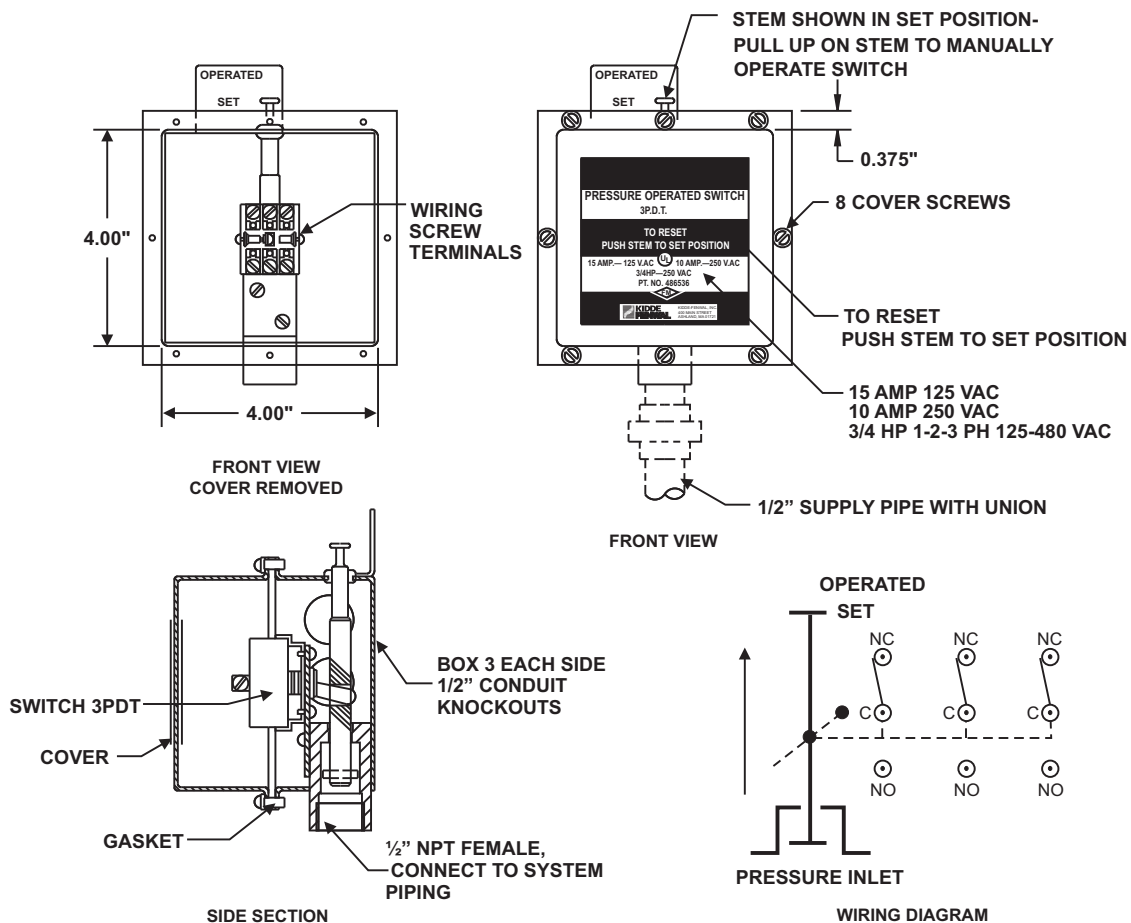
K-45-5180

Pressure Operated Switch Data Sheet

FEATURES

- For Use with UL Listed, ULC Listed, and FM Approved Systems

P/N: 81-486536-000



Notes:

- The switch may be mounted in any position, however, the preferred installation is upright, as shown.
- Any load connection to the switch must not exceed the switch rating, and shall utilize a suitable protection device (i.e., circuit breaker, fuse)
- Contact Ratings (3 PDT)
 - 15 Amp @ 125 Vac
 - 10 Amp @ 250 Vac
 - 3/4 HP @ 250 Vac
 - 1, 2, or 3 Phase

Kidde is a registered trademark of Kidde-Fenwal, Inc.

3M and Novec are trademarks of 3M.

All other trademarks are property of their respective owners.

This literature is provided for informational purposes only. KIDDE-FENWAL, INC. assumes no responsibility for the product's suitability for a particular application. The product must be properly applied to work correctly. If you need more information on this product, or if you have a particular problem or question, contact KIDDE-FENWAL, INC., Ashland, MA 01721. Telephone: (508) 881-2000.

Kidde Fire Systems
A UTC Fire & Security Company
400 Main Street
Ashland, MA 01721
Ph: 508.881.2000
Fax: 508.881.8920
www.kiddefiresystems.com

Kidde Engineered Fire Suppression System

Designed for use with 3M™ Novec™ 1230 Fire Protection Fluid



A UTC Fire & Security Company

Effective: March 2007

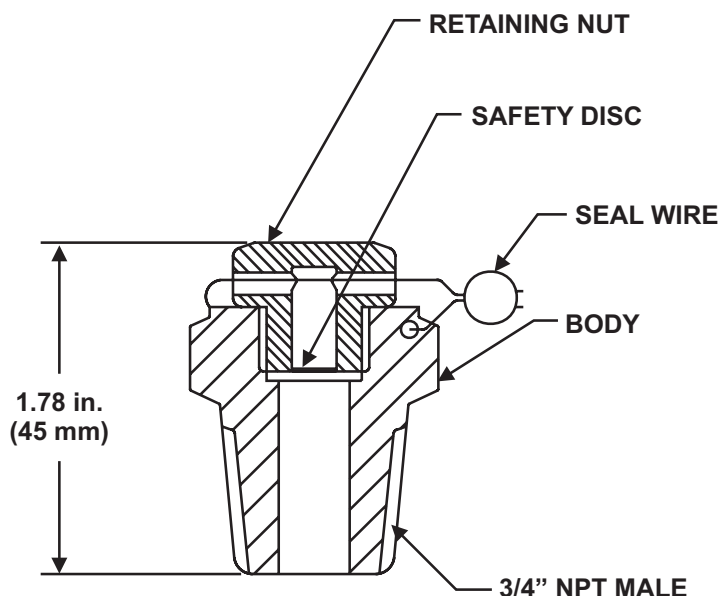
K-45-5170

Safety Outlets Data Sheet

FEATURES

- *For Use with UL Listed, ULC Listed, and FM Approved Systems*

P/N: 803242 AND 844346



Part Number	Agent	Pressure Relief Operates At:
803242	Nitrogen/CO ₂	2400 to 2800 PSI (166 to 193 bar)
844346	Novec 1230 Fluid	750 to 900 PSI (52 to 62 bar)

MATERIALS

- Body and Retaining Nut: Brass
- Seal Wire: Copper and Lead

Kidde is a registered trademark of Kidde-Fenwal, Inc.
3M and Novec are trademarks of 3M.
All other trademarks are property of their respective owners.

This literature is provided for informational purposes only. KIDDE-FENWAL, INC. assumes no responsibility for the product's suitability for a particular application. The product must be properly applied to work correctly.
If you need more information on this product, or if you have a particular problem or question, contact KIDDE-FENWAL, INC., Ashland, MA 01721. Telephone: (508) 881-2000.

Kidde Engineered Fire Suppression System

Designed for use with 3M™ Novec™ 1230 Fire Protection Fluid



A UTC Fire & Security Company

Effective: March 2007

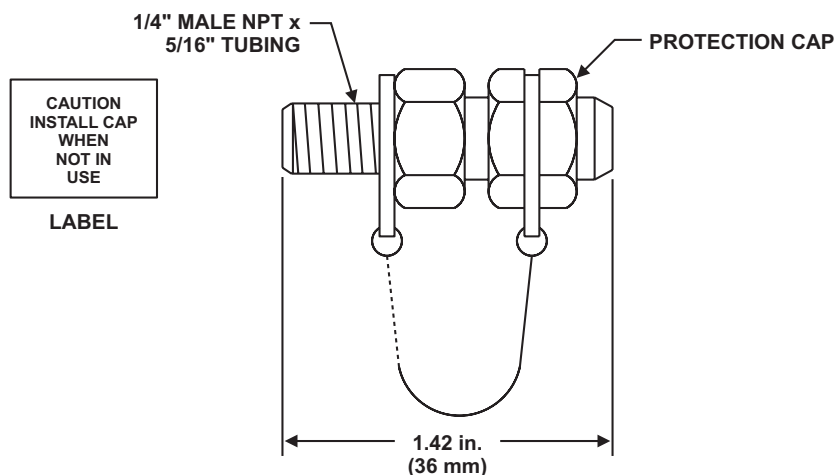
K-45-5080

Master Cylinder Adapter Kit Data Sheet

FEATURES

- For Use with UL, ULC and FM Approved Systems

P/N: 844895



MATERIALS

- Adapter and Cap: Brass
- Chain: Stainless Steel
- Label: Mylar

Kidde is a registered trademark of Kidde-Fenwal, Inc.
3M and Novec are trademarks of 3M.
All other trademarks are property of their respective owners.

This literature is provided for informational purposes only. KIDDE-FENWAL, INC. assumes no responsibility for the product's suitability for a particular application. The product must be properly applied to work correctly.
If you need more information on this product, or if you have a particular problem or question, contact KIDDE-FENWAL, INC., Ashland, MA 01721. Telephone: (508) 881-2000.

Kidde Engineered Fire Suppression System

Designed for use with 3M™ Novec™ 1230 Fire Protection Fluid



A UTC Fire & Security Company

Effective: March 2007

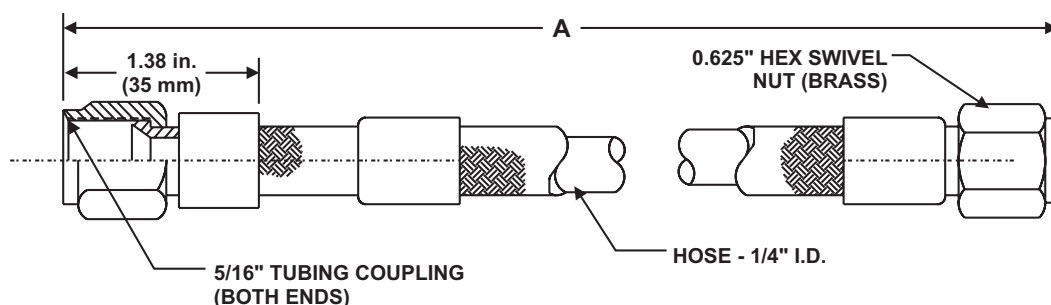
K-45-5070

1/4 in. Flexible Actuation Hoses Data Sheet

FEATURES

- For Use with UL, ULC and FM Approved Systems

P/N: 26498X



Part Number	Dimension A
264986	30 in. (762 mm)
264987	22 in. (559 mm)

TECHNICAL DATA

- Minimum Burst Pressure: 12000 PSIG
- Operating Pressure: 3000 PSIG
- Test Pressure: 4500 PSIG
- Minimum Bend Radius: 2-1/2 in.

MATERIALS

- Hose: Wire Braided, Teflon® Lining (CRES T304)
- Couplings: Brass

Kidde is a registered trademark of Kidde-Fenwal, Inc.
3M and Novec are trademarks of 3M.
All other trademarks are property of their respective owners.

This literature is provided for informational purposes only. KIDDE-FENWAL, INC. assumes no responsibility for the product's suitability for a particular application. The product must be properly applied to work correctly.
If you need more information on this product, or if you have a particular problem or question, contact KIDDE-FENWAL, INC., Ashland, MA 01721. Telephone: (508) 881-2000.

Kidde Engineered Fire Suppression System

Designed for use with 3M™ Novec™ 1230 Fire Protection Fluid



A UTC Fire & Security Company

Effective: March 2007

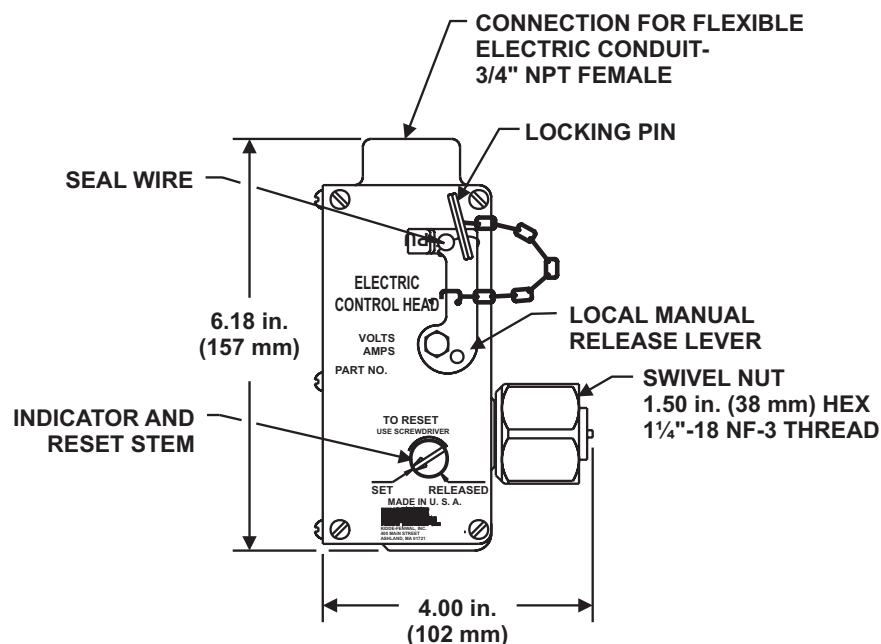
K-45-8010

Electric Control Head Data Sheet

FEATURES

- *For Use with UL Listed, ULC Listed, and FM Approved Systems*

P/N: 8901XX



Part Number	Voltage	
890181	24 Vdc	2.0 Amps
890149	125 Vdc	0.3 Amps
890165	115 Vac	1.0 Amps

Kidde is a registered trademark of Kidde-Fenwal, Inc.
3M and Novec are trademarks of 3M.
All other trademarks are property of their respective owners.

This literature is provided for informational purposes only. KIDDE-FENWAL, INC. assumes no responsibility for the product's suitability for a particular application. The product must be properly applied to work correctly.
If you need more information on this product, or if you have a particular problem or question, contact KIDDE-FENWAL, INC., Ashland, MA 01721. Telephone: (508) 881-2000.

Kidde Engineered Fire Suppression System

Designed for use with 3M™ Novec™ 1230 Fire Protection Fluid



A UTC Fire & Security Company

Effective: March 2007

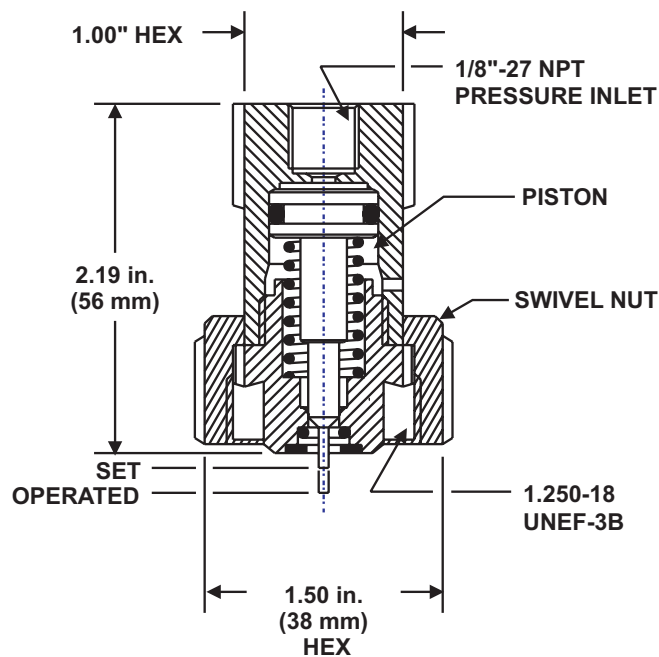
K-45-5010

Pressure Operated Control Head Data Sheet

FEATURES

- For Use with UL, ULC and FM Approved Systems

P/N: 878737



MATERIALS

Body (Retaining Nut and Piston): Brass

Kidde is a registered trademark of Kidde-Fenwal, Inc.
3M and Novec are trademarks of 3M.
All other trademarks are property of their respective owners.

This literature is provided for informational purposes only. KIDDE-FENWAL, INC. assumes no responsibility for the product's suitability for a particular application. The product must be properly applied to work correctly.
If you need more information on this product, or if you have a particular problem or question, contact KIDDE-FENWAL, INC., Ashland, MA 01721. Telephone: (508) 881-2000.

Kidde Engineered Fire Suppression System

Designed for use with 3M™ Novec™ 1230 Fire Protection Fluid



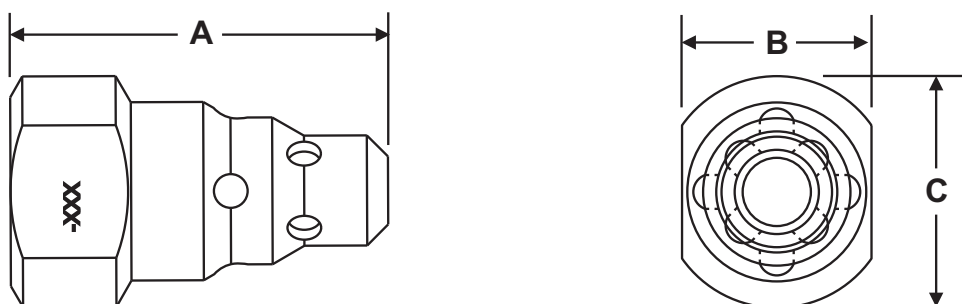
Effective: July 2010
K-45-2140

360 Degree Pendant Nozzle Data Sheet

FEATURES

- *For Use with UL Listed, ULC Listed and FM Approved Systems*

P/N 45-1946XX-XXX



Note: A selection of orifices are available for each nozzle size and make. Consult the Kidde Engineered Fire Suppression System Design, Installation, Operation, and Maintenance Manual for details.

Pipe Size	Dimension		
	A	B	C
1/4 in. (6 mm)	1.91 in. (49 mm)	1.03 in. (26 mm)	0.88 in. (22 mm)
3/8 in. (10 mm)	2.03 in. (52 mm)	1 in. (25 mm)	1.19 in. (30 mm)
1/2 in. (13 mm)	2.25 in. (57 mm)	1.13 in. (29 mm)	1.38 in. (35 mm)
3/4 in. (19 mm)	2.69 in. (68 mm)	1.38 in. (35 mm)	1.63 in. (41 mm)
1 in. (25 mm)	2.88 in. (73 mm)	1.63 in. (41 mm)	1.94 in. (49 mm)
1-1/4 in. (32 mm)	3.29 in. (83 mm)	2 in. (51 mm)	2.38 in. (60 mm)
1-1/2 in. (38 mm)	3.63 in. (92 mm)	2.25 in. (57 mm)	2.69 in. (68 mm)
2 in. (51 mm)	4.50 in. (114 mm)	3 in. (76 mm)	3.50 in. (89 mm)

Note: Nozzles are offered in either Stainless Steel or Brass.

Kidde is a registered trademark of Kidde-Fenwal, Inc.
3M and Novec are trademarks of 3M.
All other trademarks are property of their respective owners.

This literature is provided for informational purposes only. KIDDE-FENWAL, INC. assumes no responsibility for the product's suitability for a particular application. The product must be properly applied to work correctly.
If you need more information on this product, or if you have a particular question, contact KIDDE-FENWAL, INC., Ashland, MA 01721. Telephone: (508) 881-2000.

Kidde Fire Systems
A UTC Fire & Security Company
400 Main Street
Ashland, MA 01721
Ph: 508.881.2000
Fax: 508.881.8920
www.kiddefiresystems.com

Kidde Engineered Fire Suppression System

Designed for use with 3M™ Novec™ 1230 Fire Protection Fluid



Kidde Fire Systems

A UTC Fire & Security Company

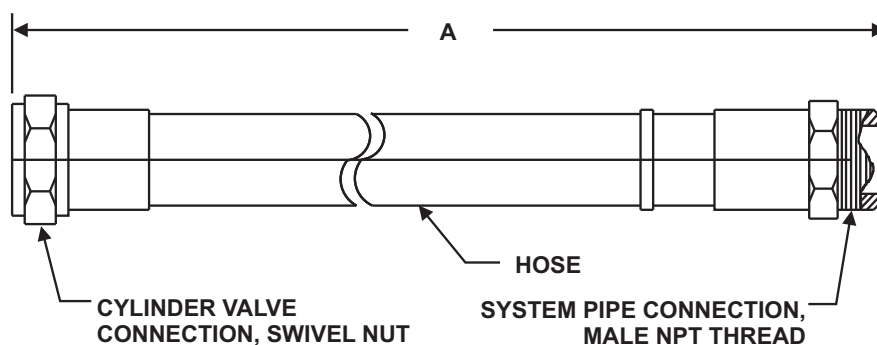
Effective: September 2011

K-45-2120

Flexible Discharge Hose Data Sheet

FEATURES

- *For Use with UL Listed, ULC Listed and FM Approved Systems*



TECHNICAL DATA

- Minimum Bursting Pressure: 2000 PSI
- Working Pressure: 500 PSI
- Proof Pressure: 1000 PSI

MATERIALS

- Hose: Reinforced Rubber Hose
- Fitting: Cadmium-plated Steel

ORDERING INFORMATION

Part Number	Male NPT	Dimension A	Min. Bend Radius
283898	1-1/2 in.	24 in.	10-1/2 in.
283899	2 in.	31 in.	13-1/2 in.
283900	2-1/2 in.	48 in.	22-1/2 in.

Kidde is a registered trademark of Kidde-Fenwal, Inc.
3M and Novec are trademarks of 3M.
All other trademarks are property of their respective owners.

This literature is provided for informational purposes only. KIDDE-FENWAL, INC. assumes no responsibility for the product's suitability for a particular application. The product must be properly applied to work correctly.
If you need more information on this product, or if you have a particular problem or question, contact KIDDE-FENWAL, INC., Ashland, MA 01721. Telephone: (508) 881-2000.